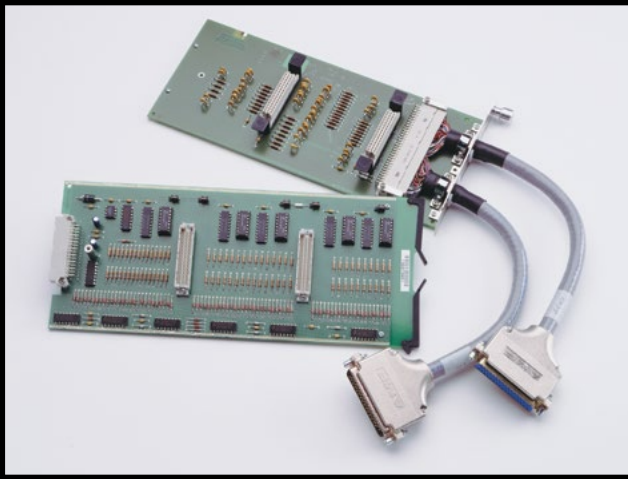


# 7020 7020-D

## Digital I/O Cards 40 Inputs, 40 Outputs



The Model 7020 and 7020-D Digital I/O Interface Cards provide high-density digital input/output capabilities in an easy-to-control form. The 7020 and 7020-D both have 40 independent inputs and 40 independent outputs, so they're well-suited for monitoring and controlling large automated test applications compactly and cost-effectively. The 7020 provides a 96-pin mass terminated connector. The 7020-D has two heavy duty 50-pin D-sub connectors at the ends of short cables. The D-sub connector version is designed for industrial/production applications where repeated connects/disconnects with external cables are required.

- 80-bit control – 40 in/40 out
- Input and output protection
- Use internal 5.3V power supply or external power supply

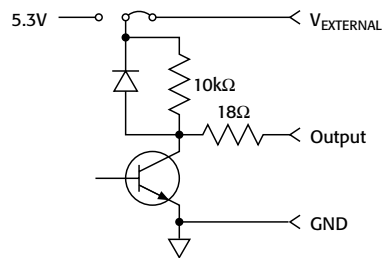
### Ordering Information

- 7020** Digital I/O Card with 96-pin Mass Terminated Connector Board
- 7020-D** Digital I/O Card with D-sub Connectors

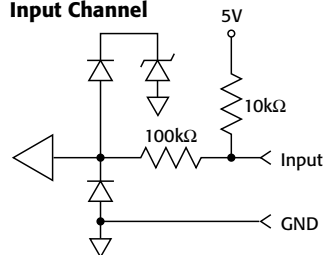
### Accessories Supplied

- With 7020: 7011-KIT-R  
96-pin Female Connector Kit

#### Output Channel



#### Input Channel



### ACCESSORIES AVAILABLE

#### FOR 7020

- 7011-KIT-R 96-pin Female Connector Kit
- 7020-MTC-2 96-pin Mass Terminated Cable, Female to Female, 2m

### SERVICES AVAILABLE

- 7020-3Y-EW 1-year factory warranty extended to 3 years from date of shipment
- 7020-D-3Y-EW 1-year factory warranty extended to 3 years from date of shipment

#### CONNECTOR:

**7020:** 96-pin male DIN connector.

**7020-D:** Cables with 50-pin male and female D-sub connectors.

**7020-DT:** Mass terminated card with D-sub connectors.

**DIGITAL I/O CAPABILITY:** 40 independent inputs, 40 independent outputs.

#### OUTPUT SPECIFICATIONS:

**CONFIGURATION:** 40 open-collector drivers with factory installed 10kΩ pull-up resistors. Pull-up resistors can be removed when driving external pull-up devices. Each driver has an internal flyback diode.

**PULL UP VOLTAGE:** 5.3V internally supplied, external connection provided for user supplied voltage 25V max. Removal of internal jumper allows use of two different pull-up voltages.

**MAXIMUM SINK CURRENT:** Per Channel: 65mA. Per Bank (8 bits): 500mA. Per Card: 1A.

**CURRENT LIMIT:** Positive Temperature Coefficient circuit protector in series with each output. Output protection resistance <18Ω.

**COLLECTOR-EMITTER SATURATION VOLTAGE:** <0.75V @ 1mA. <1V @ 65mA.

#### INPUT SPECIFICATIONS:

**CONFIGURATION:** 40 inputs with internal 10kΩ pull-up resistors.

#### CHARACTERISTICS:

Input logic low voltage:	0.8 V max.
Input logic high voltage:	2 V min.
Input logic low current:	-600 μA max. @ 0V
Input logic high current:	50 μA max. @ 5V

**MAXIMUM VOLTAGE LEVEL:** 42V peak.

1.888.KEITHLEY (U.S. only)

www.keithley.com

**KEITHLEY**

A Greater Measure of Confidence

A Tektronix Company